

30

ИШЗОЧДРЦИ



THE
SUITE SPOT

An aerial photograph of the London skyline at dusk, featuring the River Thames in the foreground. The City of London is densely packed with buildings, with the modern skyscrapers of the Canary Wharf financial district visible in the background. A specific building complex in the center-right of the image is highlighted with a blue translucent overlay. The text "A RARE OPPORTUNITY FOR THE SUITE SPOT IN A LANDMARK BUILDING" is overlaid in large white capital letters on the lower half of the image.

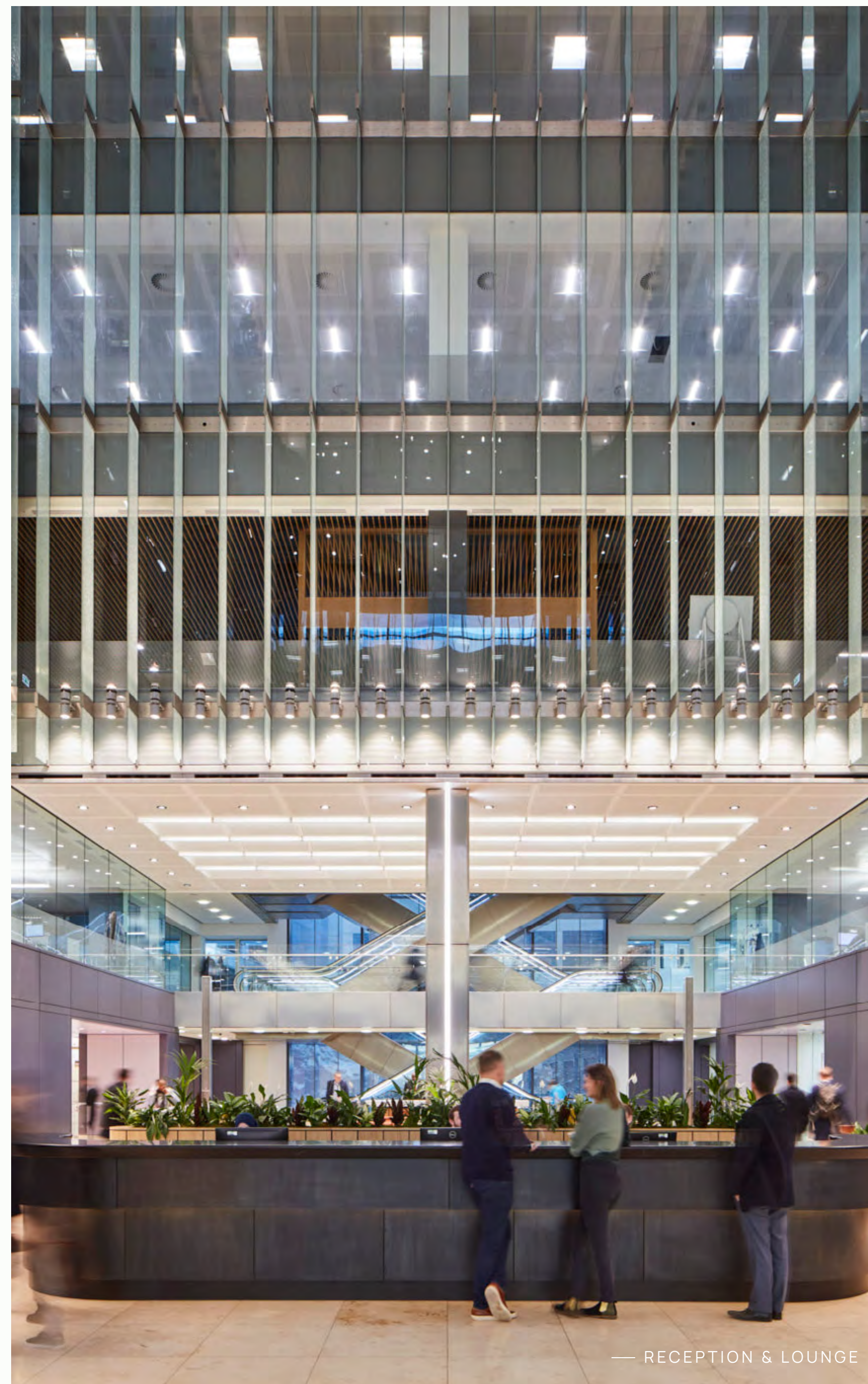
A RARE OPPORTUNITY
FOR THE
SUITE SPOT
IN A LANDMARK BUILDING



— EXTERIOR VIEW FROM FENCHURCH STREET

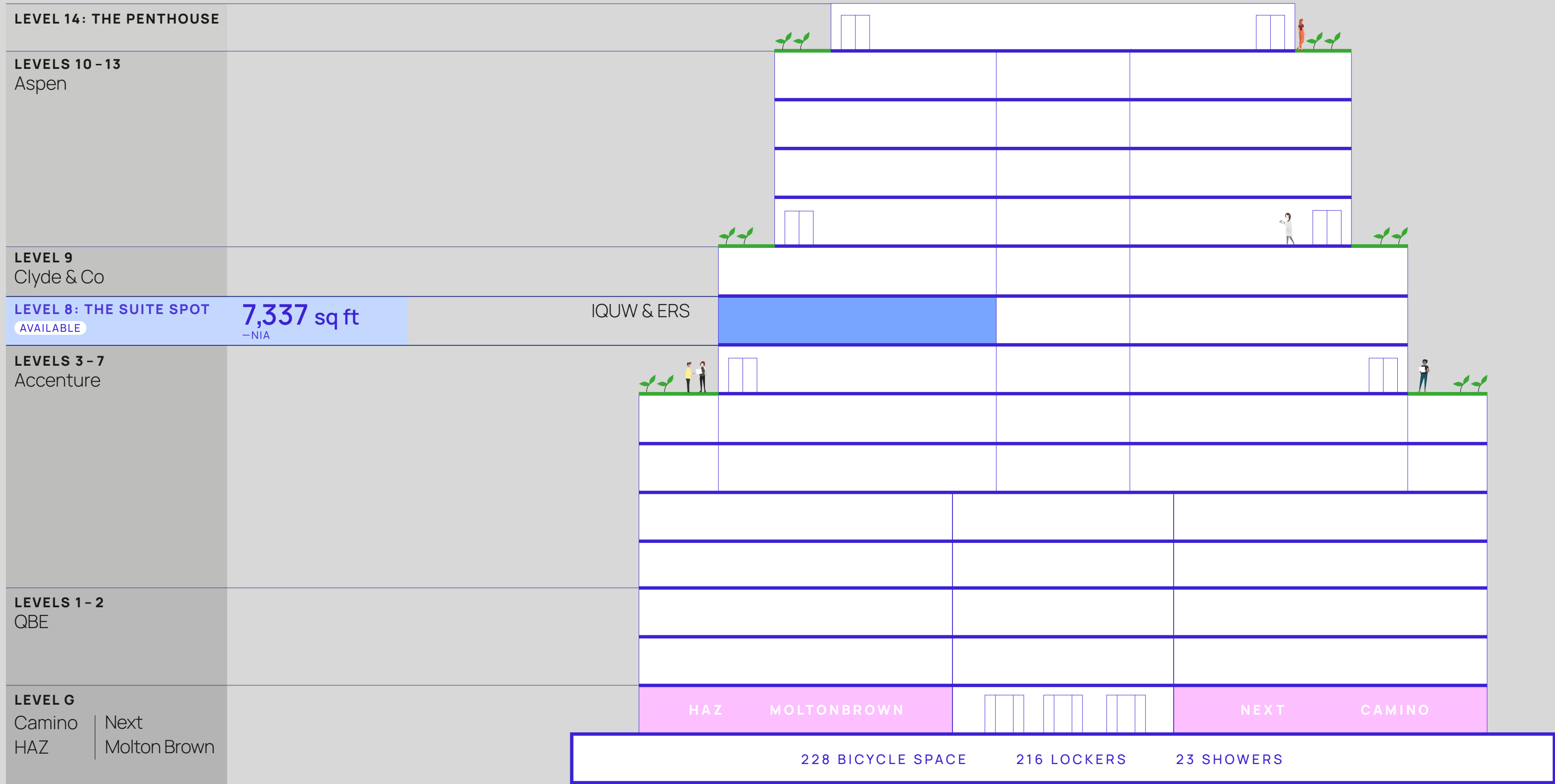


A NEW ARRIVAL EXPERIENCE





FOR THE

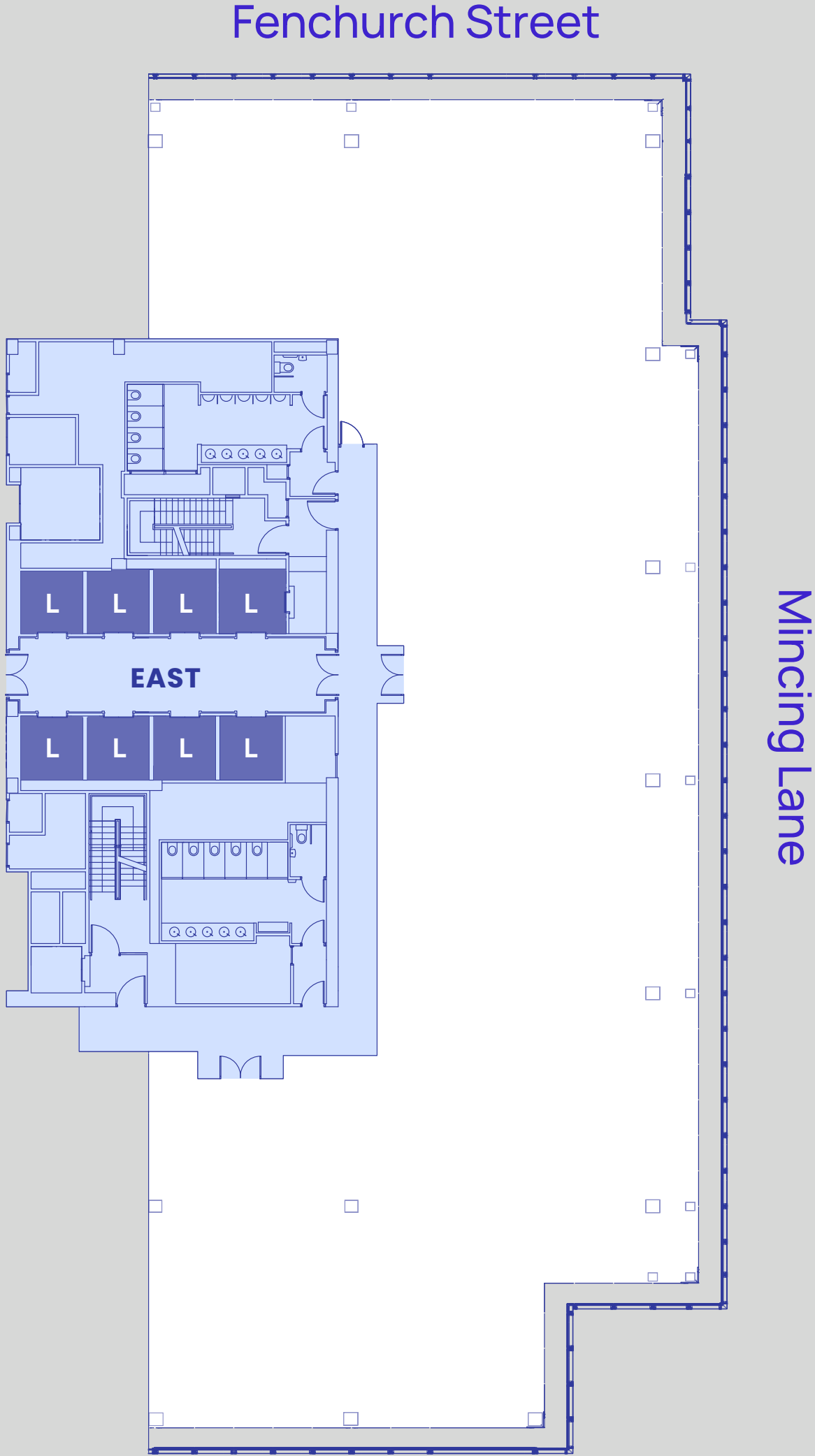


URBAN
COMMUNITY

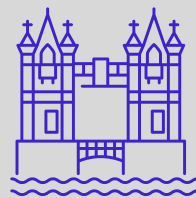


— INTERIOR SPACE OF LEVEL 8: THE SUITE SPOT

LEVEL 8:
THE SUITE
SPOT

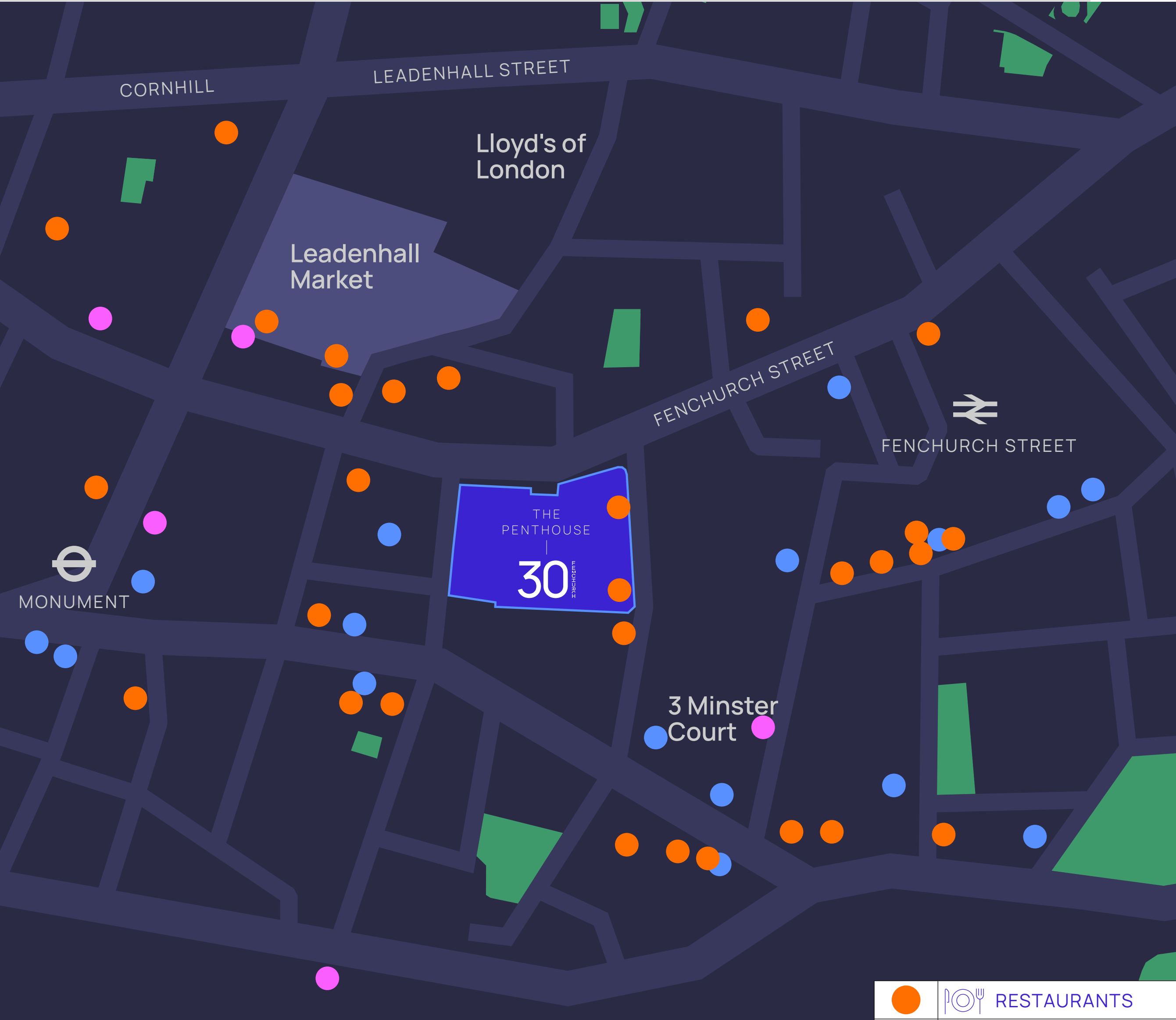


7,337 sq ft
- NIA









A THRIVING NEIGHBOURHOOD

●		RESTAURANTS
●		CAFÉS AND BARS
●		GYMS



— SKY GARDEN



— LEADENHALL MARKET



— 14 HILLS



THE BUILDING SPOTS





Activated is a dynamic tenant engagement platform, bringing unique, fun experiences, health and wellness classes and exclusive perks and promotions to our spaces. Being a tenant of Brookfield Properties unlocks an entire network of possibilities, for every employee.



Arts Brookfield



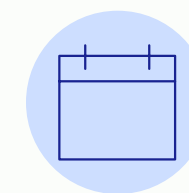
Happy Hours



Workshops



Wellness Classes



Holiday Events



Cultural Excursions

— CHRISTMAS ACTIVATION

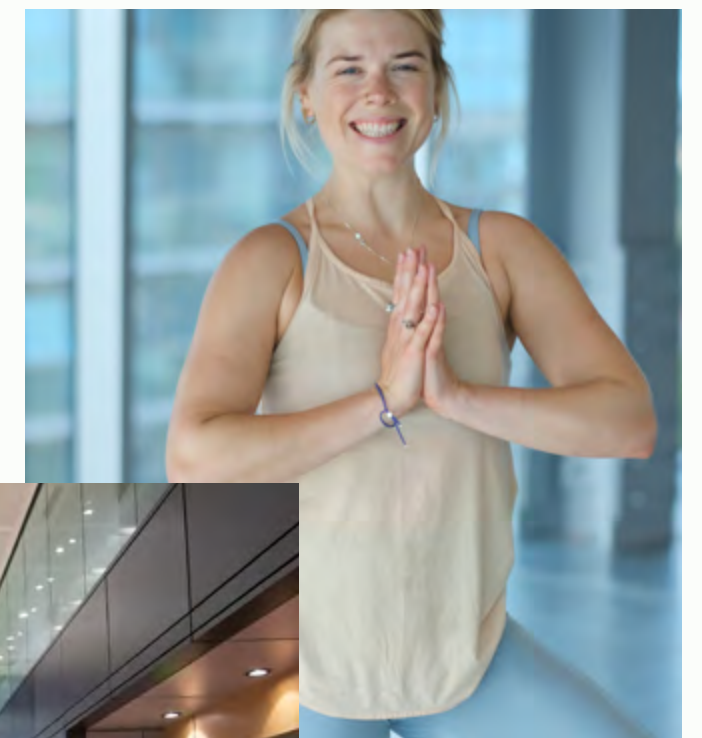
THE ULTIMATE TENANT EXPERIENCE



axiis

The app that
revolves around you

— YOGA CLASSES



— SOFAR SOUNDS

SUSTAINABILITY FIRST ALWAYS



— TERRACE



— UPCYCLING ART INSTALLATIONS

Our Sustainability Pillars

We create vibrant and valued environments for the people who work, live and visit there every day. Because at Brookfield Properties, sustainability isn't a box we check. It's how we do business.



Real Estate Management

Mitigate the impact of our operations on the environment



Tenant Experience

Be good stewards in the communities in which we operate



Development & Design

Ensure the wellbeing and safety of employees



Property Management

Conduct business according to the highest ethical and legal standards



Emphasising
Workplace Wellness,
Health and Safety

CERTIFICATIONS



For commitment
to Active Travel



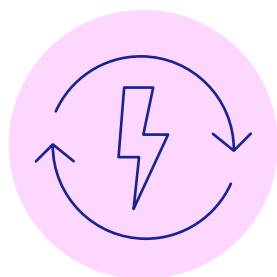
Analytics to support
Energy Efficiency
Optimisation

CERTIFICATION TARGETS



Global ESG
Benchmark for
Real Assets

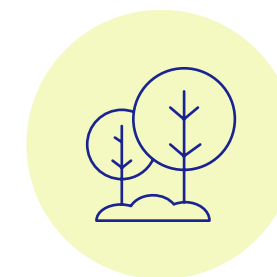
MAKING SUSTAINABILITY A REALITY



Electricity supply is **100% REGO-backed renewable energy**; providing transparency on renewable energy supply



Retaining and refurbishing materials during the renovation achieved a **saving of 587 tonnes in embodied carbon**



By refurbishing the floor and ceiling tiles we **saved 452 tonnes of carbon**. Equivalent to 22,600 trees growing for a year

GET IN TOUCH

NEWTON
PERKINS

Nick Russell-Smith

+44 7918 588 107

nrs@newtonperkins.com

Christopher Sutcliffe

+44 7970 831 250

crs@newtonperkins.com

Harry Woods

+44 7884 602 870

hw@newtonperkins.com

Disclaimer

Misrepresentation Act 1967 & Property Misdescriptions Act 1991: Newton Perkins and the lessors notify that these particulars are set out as outlines only and do not constitute any part of an offer/contract. All descriptions, dimensions, necessary permission for use and occupation, and other details are given in good faith and are believed to be correct. Any intending occupiers should not rely on them as statements or representations of fact and must satisfy themselves as to the correctness of each of them. No person employed by the agents has authority to make or give representation/warranty in relation to this property. May 2023